



FOLDING CONTAINER HOUSE: AMH-4000 SERIES

GENERAL

1. The standard container for various purposes is suitable for international container transport. It is of appropriate external dimensions and has connections for lifting and fixing or compounding.
2. The container is designed as a light construction consisting of floor and roof frames and corner profiles.
3. The wainscots of the container are made of light insulation panels and offer pleasant climate in the interior due to their building and physical properties.
4. Materials are environmental friendly.

AMH-4120

DIMENSIONS AND WEIGHT

- Dimension: (L)5950mm X (W)3300mm X (H)2550mm
- Folded dimension: (L)2090mm X (W)3400mm X (H)2550mm
- Area of build: 19.64m² = 212.112ft
- Weight: 1848.00kg = 4074.84lb
- Folded Weight : 1408kg = 3104.64lb

PICTURES:

1. Outside pictures:

- 《A》 Red wall & white frame,
- 《B》 Orange + ivory white wall & dark brown frame,
- 《C》 Ivory white wall & dark brown frame



《A》



《B》



《C》

2. Folded pictures :

《A》 front elevation

《B》 side elevation

《C》 back elevation



《A》



《B》



《C》



3. Inside pictures :

- 《A》 False ceiling, light and PVC trims
- 《B》 PVC flooring, PVC trims and skirting boards
- 《C》 Aluminium door and window and wall panels



《A》 《B》 《C》

- 《D》 PVC flooring, PVC trims and skirting boards on walkway
- 《E》 Bathroom unit
- 《F》 PVC flooring, PVC trims and skirting boards on walkway



《D》 《E》 《F》

STEEL FRAMEWORK

Frame:

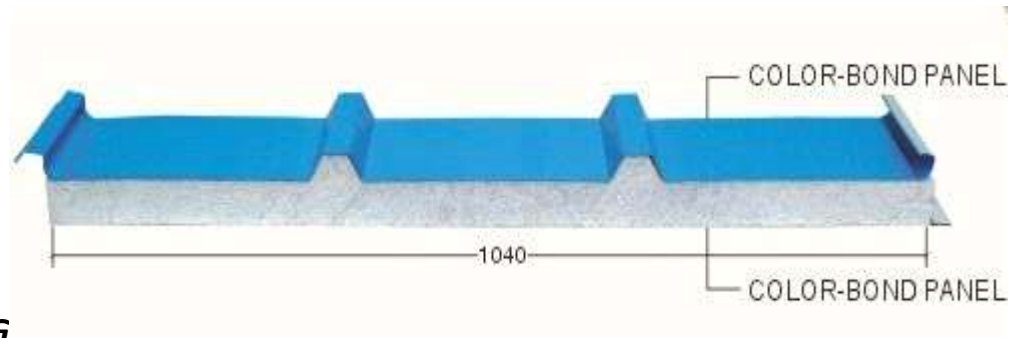
Transpack or welded corners cold formed steel profiles in a thickness of 3 mm-5mm screwed in corners without forklift pockets 160mm、 140mm steel channels: channels ; 100x50x2.0、 80x40x2.0、 40x40x2.0square bars ; L40X3.0angle steels ; 3mm、 2mm bending steel sheets.

ROOF

Composition:

- External wainscot: flat galvanized and painted steel sheet in a thickness of 0.326 mm
- Insulation filling: EPS in a thickness of 75mm(12 kgs /M3 density) among steel purlins
- Inner wainscot: color steel sheets in a thickness of 0.326mm for roof ceiling

Load capacity: 0.6 KN/m²



CEILING



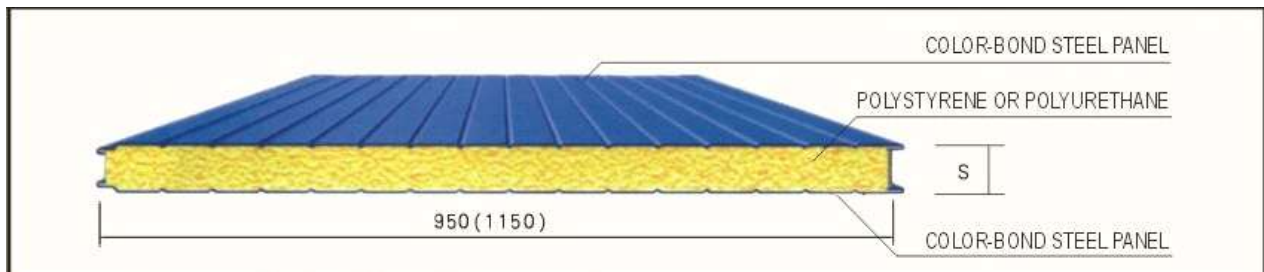
Note:

All the insulation materials shall be changed to PU, ROCK WOOL, GLASS WOOL or other materials according to clients' requirements.

WALL

Composition:

- External cladding: galvanized and coated steel sheet in a thickness of 0.326mm
- Insulation filling: EPS in a thickness of 50mm (density:12 kgs /M3)
- Inner cladding: galvanized and coated steel sheet in a thickness of 0.326mm



FLOOR

Composition:

- Floor covering: PVC Flooring Adhesive in a thickness of 2mm.
- Sub floor: CCA wooden board in a thickness of 12 mm.
- Floor skirting boards: PVC skirting boards in a width of 83mm.



floor carpet 1



floor carpet 2



floor carpet 3

SANITARY INSTALLATION

Option 1: without bathroom unit

Option 2: equipped with bathroom unit



DOOR:

Material:

- sandwich panel door, single or double leaf, door blade with aluminium channels on both sides
- Quantity: 1 piece of exterior door, 3 pieces of interior doors (including the toilet door).
- Size: 840mm x 2030mm(single),
- Opening outside
- Optional Colors: white, red



WINDOW:

Material:

- Aluminum alloy framed window with sliding glass.
- Size: 925mm x 1740mm
- Installation: fixed by crews and bolts, the connection are sealed by silicon sealant
- Glazing: 4mm single glass.
- Color: white

ELECTRICAL INSTALLATION

Construction:

Concealed cabling. All electrical installations meet the current national regulations

Technical data:

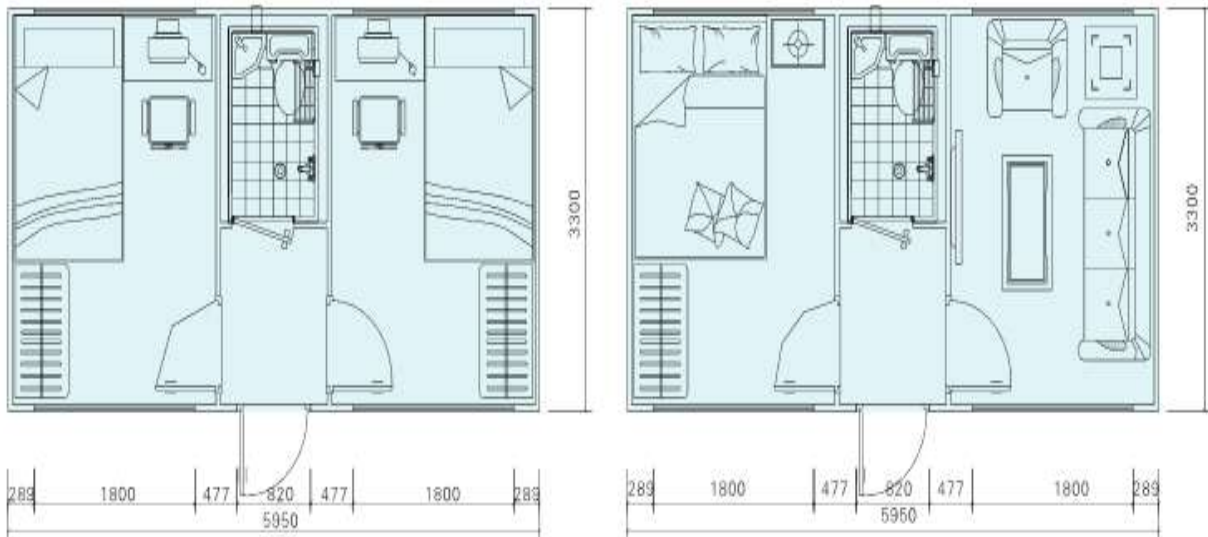
-Voltage 220V, 50 Hz,

Item	Quantity (pcs)
Electricity box	1
AC sockets 2	2
light switches	4
ceiling lamps (28W)	4
5-pole sockets	3
cabling wires(3X2.5)	40 meters
1P circuit breaker(16A)	3
Leakage current switch(30A)	1
Exhaust fan	1

TECHNICAL PARAMETER

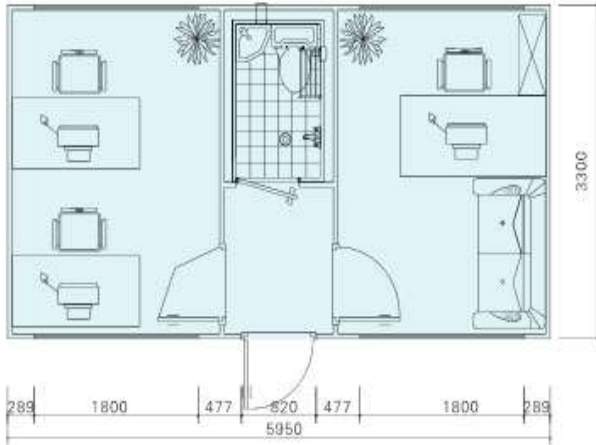
- Snow load: 60kg/ m²
- Internal and External wall heat transmission coefficient: 0.35Kcal/m²hOC
- Roof live load: 0.5 kN/m², roof dead load:0.2 kN/m²
- Wind load: 0.65kN/m²
- Snow load: 0.5kN/m²
- Heat transmission coefficient: 0.21Kcal/ m²hOC
- Floor live load: 2.0kN/m², floor dead load: 0.25kN/m²
- Wind Resistance: Grade 11 (28.5---32.6m/s)
- Earthquake Resistance: Grade 7

RECOMMENDED LAYOUTS

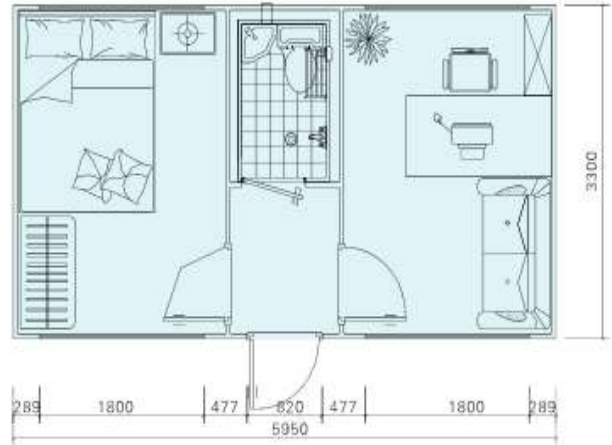


A. 2 bedrooms

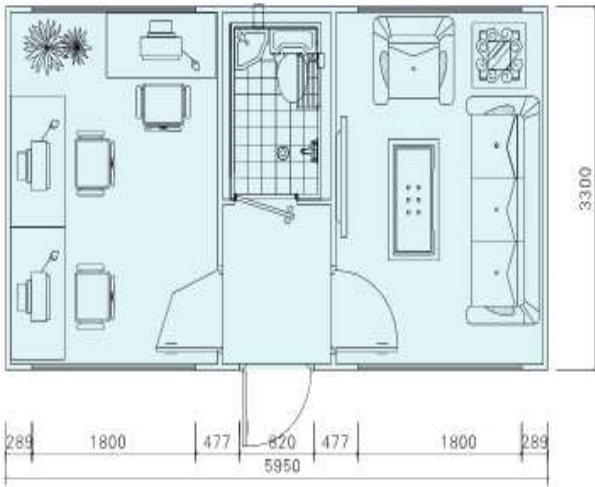
B. 1 bedroom + 1 living room



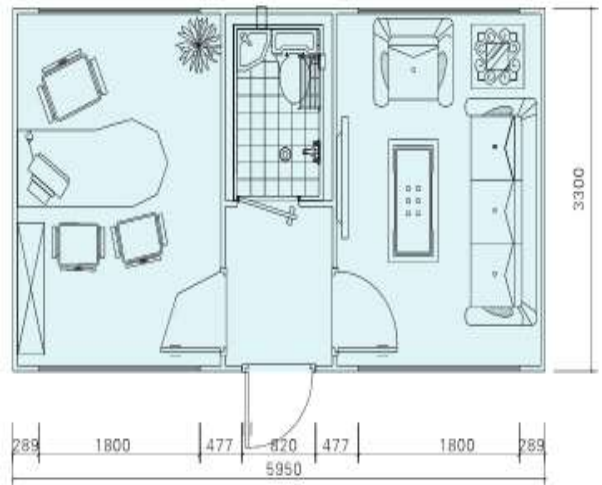
C. 1 office (2 desks) + 1 manager office (1 desk)



D. 1 bedroom + 1 manager office (1 desk)



E. 1 office (3 desks) + 1 reception room



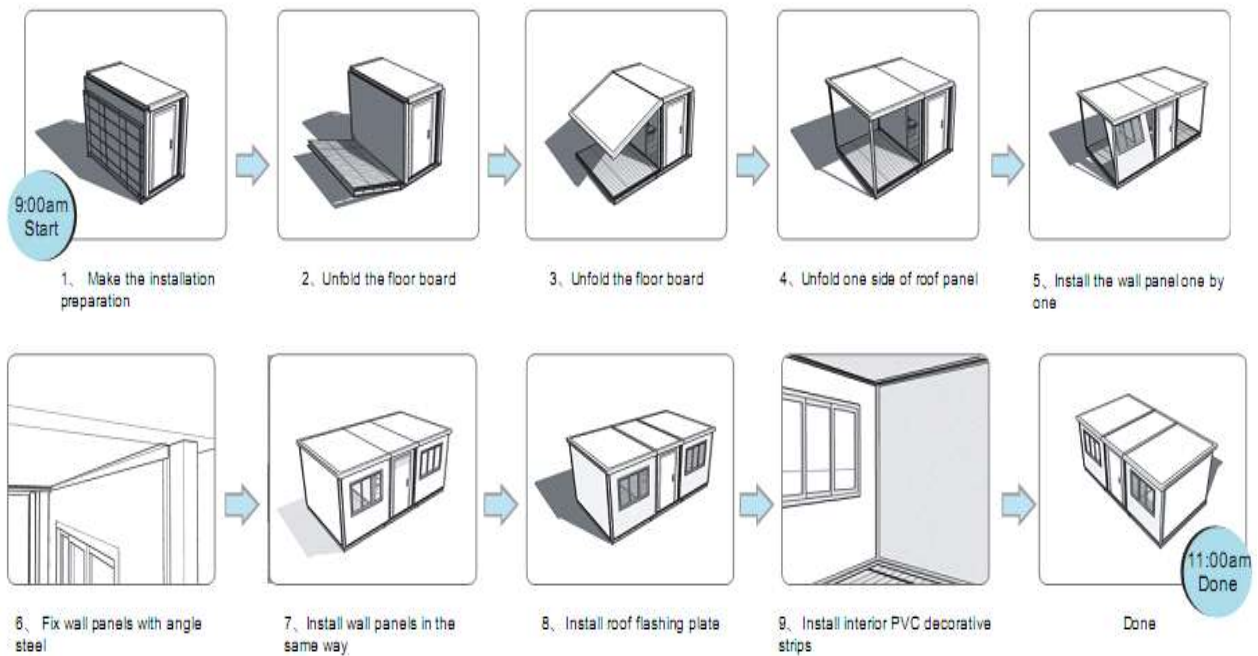
F. 1 manager office + 1 reception room

PACKING & LOADING

3 units per 40'HQ container (High cube dry container: 12.31x2.35x2.69M)



INSTALLATION





FEATURES

- An idea solution for places that don't have work site possibility and for continuously mobile place
- Compact and comfortable
- Quick and easy to assemble
- Cost-efficient for less material and labor
- Water and electricity system pre-engineered
- Excellent sound-proofing and heat-proofing

APPLICATION

- Temporary staff accommodations
- Temporary Offices at construction sites
- Temporary shops

AMH-4122

Introduction:

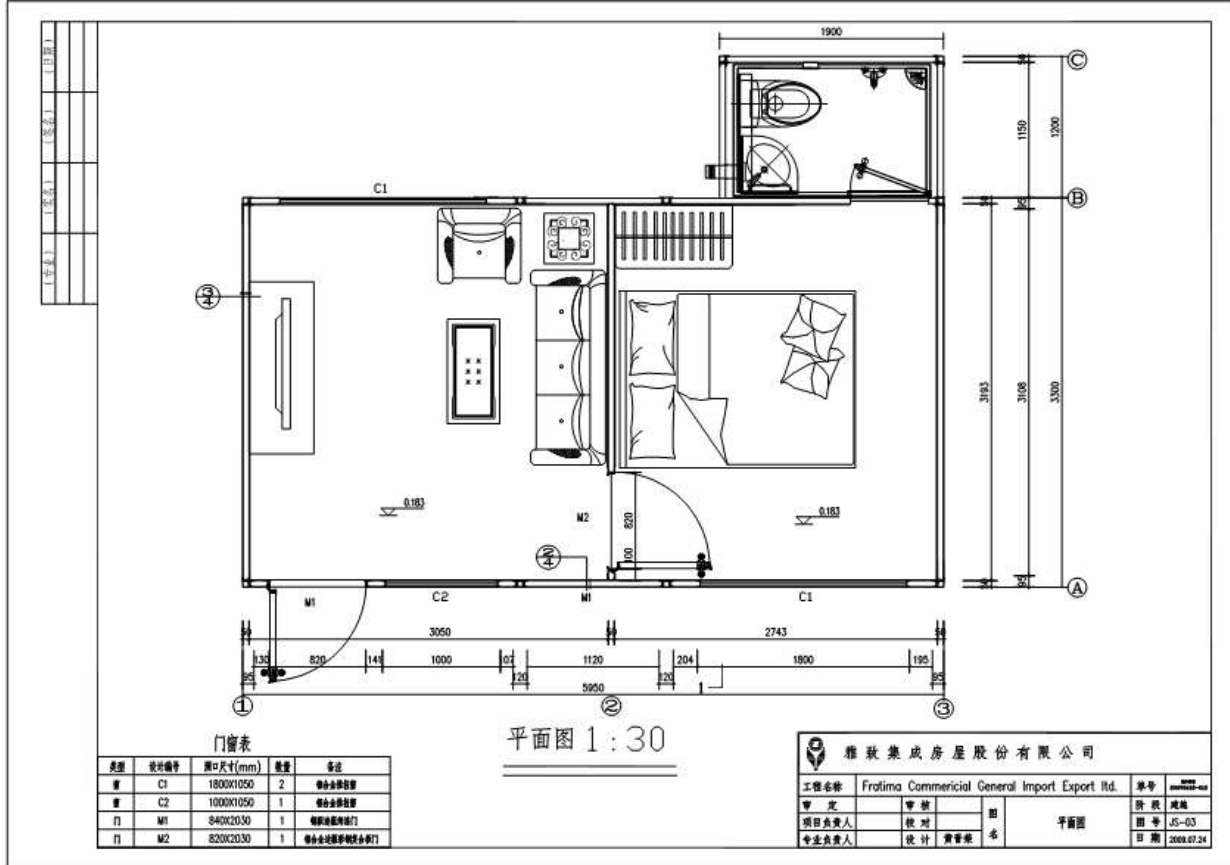
YMH-4122 is redesigned based on YMH-4120. The difference between the two is the bathroom is located outside of the house. See the following photos:

Dimension: (L)5950mmX(W)3300mmX(H)2250mm+(L)1900mmX(W)1200mmX(H)2500mm

Floor area: 21.92 m2

Floor Plan:

Other specifications are as same as AGT-4120 above.



AMH-4147

Introduction:

YMH-4147 is combined by YMH-4120 and YMH-4122, with the sloping roof and the balcony.

Dimension:

(L)5950mmX(W)3300mmX(H)2250mm+(L)1900mmX(W)1200mmX(H)2500mm
 +(L)5950mmX(W)3300mmX(H)2250mm+(L)4050mmX(W)1200mmX(H)2500mm

Floor Area: 47 M2

Other specifications are as same as YMH-4120 above.



MODULAR HOUSE

